



desert conservation
PROGRAM
respect, protect and enjoy our desert!

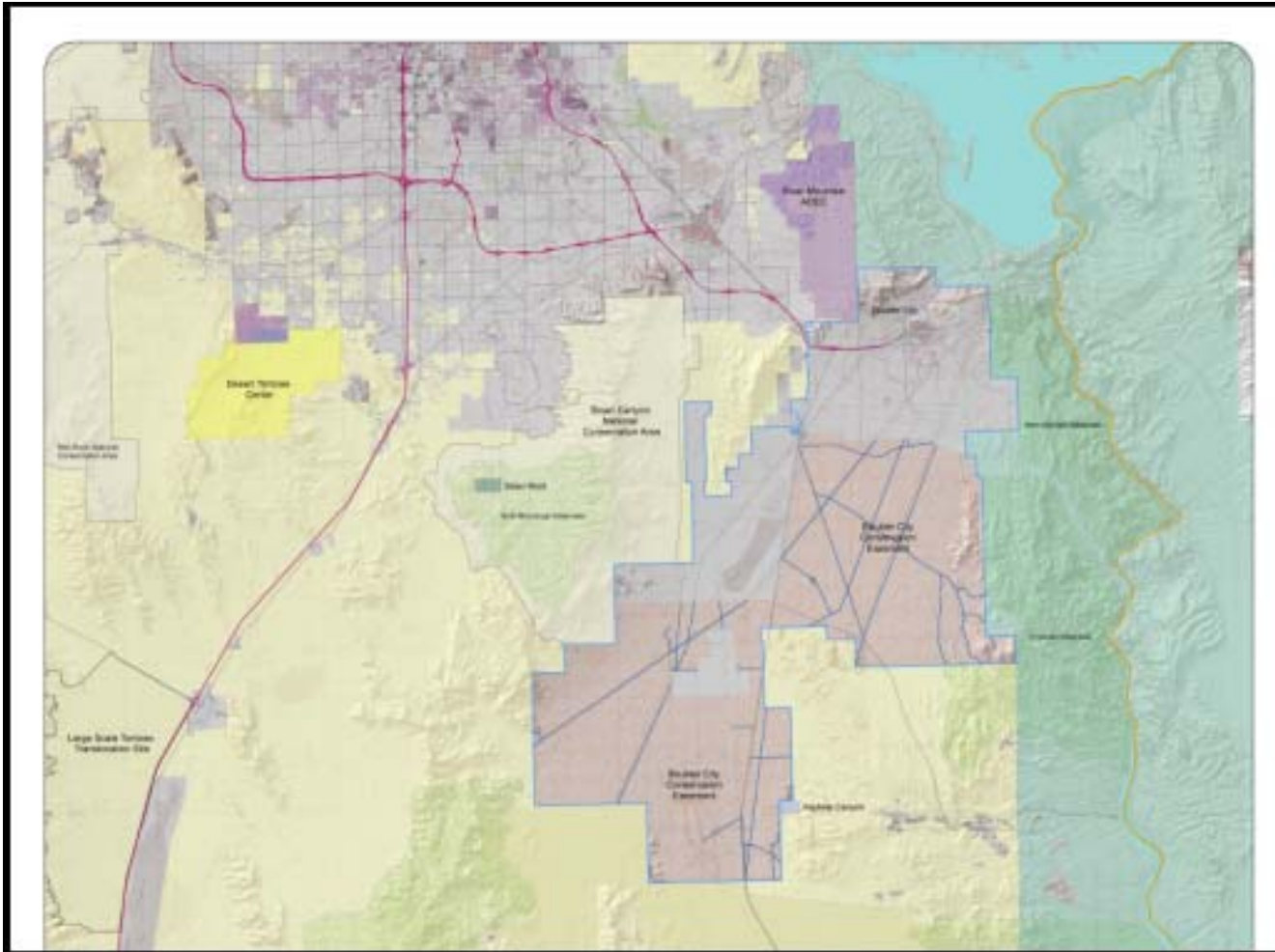
Boulder City Conservation Easement





desert conservation
PROGRAM
respect, protect and enjoy our desert!

BCCE MAP





desert conservation
PROGRAM
respect, protect and enjoy our desert!

BCCE Facts

- Clark County obtained easement from Boulder City in 1995 for \$300,000
- The easement grant was signed by Clark County on behalf of all MSHCP Permittees, and Boulder City – the land owner.
- MSHCP Permittees: Boulder City, Clark County, Henderson, Las Vegas, North Las Vegas, Mesquite, & NDOT.
- Boulder City is responsible for permitting activities.
- The easement grant goes for 50 years until 2045.



desert conservation
PROGRAM
respect, protect and enjoy our desert!

BCCE Facts

- 58 Right-of-Way Grants on the BCCE.
- The Energy Development area inside the BCCE is not a part of the BCCE.
- BC Waste Water Treatment Plant allowed under the easement agreement between Clark County and Boulder City to discharge onto the BCCE under controlled circumstances. (as per NDEP)
- Unauthorized pet burial on the BCCE: 13.67 acres with 1562 graves.
- The pet burials started in the early 1960s.



desert conservation
PROGRAM
respect, protect and enjoy our desert!

BCCE ROW Before





desert conservation
PROGRAM
respect, protect and enjoy our desert!

BCCE ROW – After





desert conservation
PROGRAM
respect, protect and enjoy our desert!

BCCE Pet Burial





desert conservation
PROGRAM
respect, protect and enjoy our desert!

BCCE Facts

- BCCE activities significantly decrease with: high gas prices, excessive heat, cold and rain.
- 105 miles of open roads on the BCCE
- 202 miles of closed roads on the BCCE
- Over 180 signs on the BCCE
- On open roads the speed limit is 25 mph.
- Clark County provides for law enforcement.



desert conservation
PROGRAM
respect, protect and enjoy our desert!

BCCE Signs





desert conservation
PROGRAM
respect, protect and enjoy our desert!

BCCE Signs





desert conservation
PROGRAM
respect, protect and enjoy our desert!

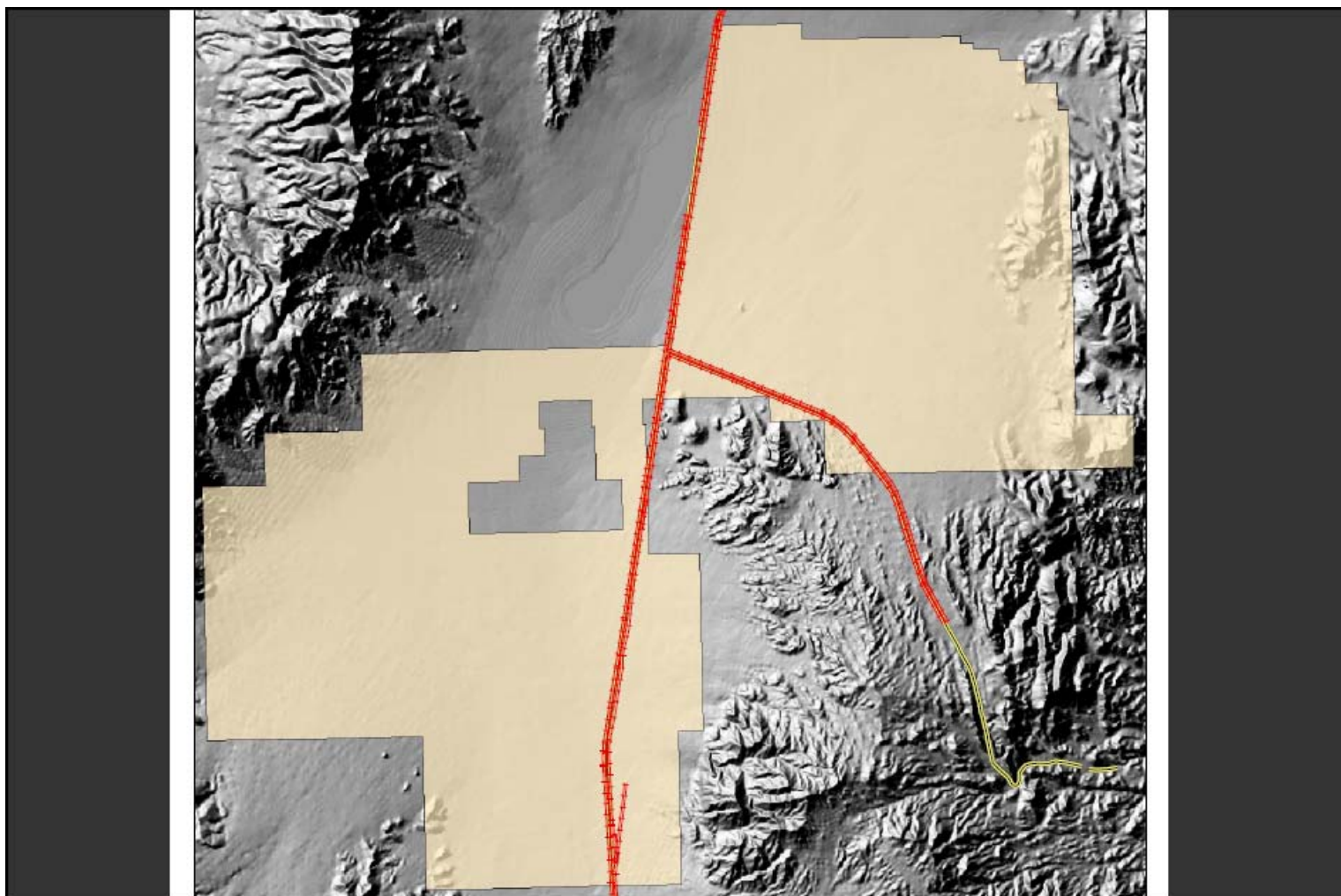
BCCE OHV





desert conservation
PROGRAM
respect, protect and enjoy our desert!

BCCE Tortoise Fencing





desert conservation
PROGRAM
respect, protect and enjoy our desert!

BCCE Law Enforcement

• **BCCE Law Enforcement Objective**

First: To Inform and Educate

Second: To Cite when necessary



desert conservation
PROGRAM
respect, protect and enjoy our desert!

BCCE Law Enforcement

- DCP Contracted with NDOW to provided Law Enforcement from 1995 to 1999

- DCP Contracted directly for Law Enforcement 1999 to June 2009

Michael Creathbaum from 1999 to 2003

Robert Oliver from 2003 to June 2009

- DCP Contracts with BCPD for Law Enforcement starting June 2009



desert conservation
PROGRAM
respect, protect and enjoy our desert!

BCCE Law Enforcement

BCCE Patrol Statistics for 2008

- 1,480 hours of patrol
- 14,566 miles on patrol in and around the BCCE
- 1,140 members of the public contacted.
- 695 maps, 494 brochure and 352 “Other” handouts from the DCP
- 15 citations for violations within the BCCE
- 38 warnings for minor violations within the BCCE (only 9 months)
- Assisted other Law Enforcement agencies 33 times



desert conservation
PROGRAM
respect, protect and enjoy our desert!

BCCE Illegal Activities





desert conservation
PROGRAM
respect, protect and enjoy our desert!

Boulder City Conservation Easement

